

imagePROGRAF
PRO-541S | PRO-561S

Canon

Delighting You Always

WHERE PRODUCTIVITY AND PRINT QUALITY MEETS



THE LARGE-FORMAT PRINT WORKHORSE

The Canon imagePROGRAF PRO-541S and PRO-561S are, without a doubt, the professional large-format printers built for colour consistency, fast print speeds, low running costs while offering remarkable reliability.

PRO-541S Max. Print Width	PRO-561S Max. Print Width	AUTO Media Detection	AUTO Estimation of Remaining Media
L-COA PRO	LUCIA PRO ink	FINE 1.28" Wide Print Head	500 GB Encrypted HDD
Connectivity	Dual Roll System (Optional)	4.3" Colour LCD Touch Panel	Multiple Solutions

WHERE PRODUCTIVITY AND PRINT QUALITY MEETS

Introducing the Canon imagePROGRAF PRO-541S and PRO-561S large format printers. With an 8-colour LUCIA PRO ink system designed for vibrant colours and smooth gradations, these printers are the next-generation print workhorses to drive any business. Ideal for the production of commercial advertisement posters, signages, POS and soft proofing, expect high print efficiency with superb print quality to match.



imagePROGRAF
PRO-561S



AUTO MEDIA LOADING

Simply load the media roll into the feeder and the printer automatically feeds the media and adjusts it to printing ready state, eliminating any manual feeding of the media into specific position. This drastically reduces time taken for media loading and reduce the handling of media surfaces which may cause fingerprints or other dirt adhering to expensive glossy paper and art paper.

AUTO MEDIA DETECTION



Advanced multi-sensor technology allows the printers to detect media type automatically with the database pre-registered in the printer. Ink usage are optimised to create high quality output. The printer automatically performs the series of operation from media feeding to media type detection, setting and adjustment to print ready status with minimal supervision. This dramatically saves both time and labour even when the print workflow involves a variety of media.



AUTO ESTIMATION OF REMAINING ROLL AMOUNT



The PRO-series printers are capable of automatically estimating the remaining roll amount. This is conveniently displayed on the operational panel and warns user whenever the media is insufficient for completing print jobs. This eliminates the need of barcode printing while saving time, paper and ink.



CONSISTENT COLOUR REPRODUCTION

A standard feature of colour calibration using an in-built multi-sensor for scanning printed colours to compensate for any variation due to differences among printers or changes over time. The amount of ink ejected is adjusted to the correct density accordingly to achieve consistent colour reproduction. This enables easy, fast and high-precision adjustment of printed colours on a variety of media without any additional costs, providing an economical workflow for users.



imagePROGRAF
PRO-541S

PRECISION ENGINEERING FOR THE PERFECT PRINT

LUCIA PRO INK ADVANCED PIGMENT INK

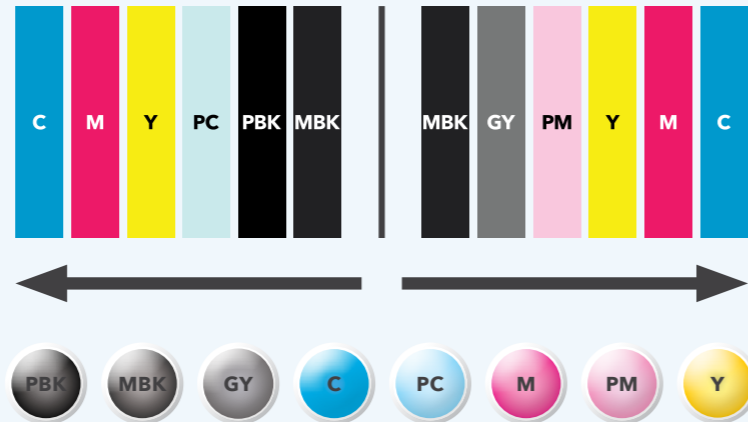
LUCIA PRO pigment ink microencapsulates the colour materials to exhibit high ink colour performance and produce prints with vibrant colours. Thanks to this technology, smoothness of the printed surface is increased which reduces scattered light from the media surface and improves prints' glossiness. The ink materials are arranged densely on the printed media, providing true-to-life prints.

8 COLOURS LUCIA PRO INK SYSTEM

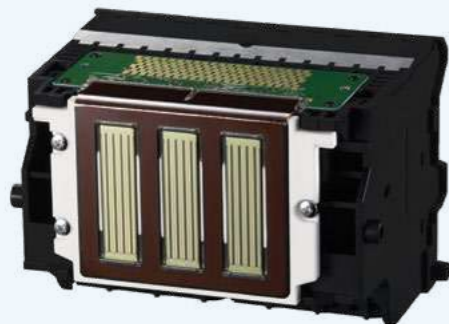
The LUCIA PRO ink is arranged in a mirror layout on the print head, symmetrically arranging the colours: C, M, Y and MBK. This layout allows for the same ejection order of the four key colours during the bi-directional printing process, resulting in achieving high quality prints with fast print speeds.



Mirrored nozzle layout of dense inks

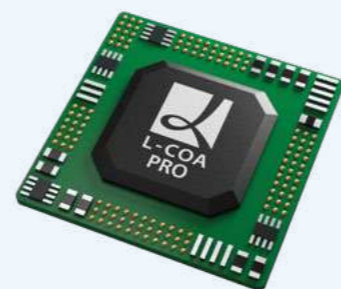


**18,432
NOZZLES**



FINE PRINT HEAD

The new PRO-series printers are equipped with a single 1.28-inch wide, 8-colour integrated compact Full-photolithography Inkjet Nozzle Engineering (FINE) printhead. 8-colour inks are ejected from a total of 18,432 nozzles. These enables fast printing while maintaining high print quality.



L-COA PRO PROCESSOR

L-COA PRO high-speed image processing engine equipped in the printers improve and maximise users' productivity with the ability to process high resolution, high volume data at high speed.



HIGH-PRECISION MECHANICAL PLATFORM

The PRO-series uses a printer mechanical platform with a highly precise and rigid printer frame capable in suppressing oscillation and shaking during print head scanning, as well as high-precision ink placement with little inter-colour discrepancy. These greatly influences the ink ejection accuracy for high quality print reproductions.



SELECT INK TANK SIZES

700ml, 330ml, and 160ml based on each colour usage frequency to reduce running costs.



HOT SWAP INK TANK

Replace ink tanks on-the-fly without interrupting print jobs.



LARGE 4.3" CAPACITANCE TOUCH PANEL

All-in-one view allows remaining media and consumables availability to be viewed instantly at a glance, all settings easily done in one step.



DIRECT USB DRIVE PRINTING

Print JPEG and PDF conveniently with Direct USB Drive Printing



MULTI-POSITIONAL BASKET

Choose different basket positions for prints collection to suit each needs. Positions available are front delivery, flatbed stacking, slope and regular basket.

TAKE-UP FUNCTION

Rewinding for take-up functions can be performed with the printed surface on the inside as well as the outside, preventing printed matter from becoming scratched or dirty. The re-wound roll can be easily delivered to the next process such as lamination. Manual processing time is reduced, achieving efficient workflow.

FREE SIZE BORDERLESS PRINTING

Print free size borderless prints up to 52 sizes on all standard paper without trimming prints. Custom paper sizes are also available.

AIR FEEDING SYSTEM

Air Feeding System uses a suction fan to prevent media from floating up from the platen, enabling stable transport along the platen without fluttering or bending during the printing process for all variety of media. This enhances ink placement precision which ensures drawings with high-precision reproduction of posters and graphics with minimum colour shift and colour variance.

NON-FIRING DETECTION AND COMPENSATION SYSTEM

Equipped with in-built sensor, the non-firing detection and compensation system precisely checks the ink ejection from print head nozzles and eliminates use of clogged nozzles by compensating ink ejection using another nozzle. This significantly reduces misprints caused by nozzle clogging and maintain the high quality of prints.

ROBUST SECURITY FOR EASE OF MIND PRINTING

SECURE PRINT

To prevent any information leaks or accidental release of printed materials, users can only gain access to the printers by entering the correct passcode at the operational panel. This greatly enhances document security and minimises human errors.

HARD DISK DRIVE ENCRYPTION

To prevent leaks of confidential information from the printer's hard disk, print jobs and other data are encrypted before it is written to or stored on the disk.

SECURE DISK ERASURE

Secure disk erasure removes the disk's data encryption key using random data and coding, making it virtually impossible to recover overwritten data. This is exceptionally useful for erasing highly confidential data.

SECURE PROTOCOLS

Data are also transmitted securely through secured protocols such as IPSec, SNMPv3, SSL/TLS and 802.1x authentication.

FULL ADMINISTRATOR CONTROL

Administrators can restrict users' Ethernet, Internet, Wi-Fi, USB and USB Flash Drives connections to the printer, printing and access using each connection method to prevent misuse. Use of FTP and Telnet communication protocols can also be restricted. Administrators can also prevent general users from viewing certain information, executing menu commands or changing settings, preventing all use of operation panel by setting up these restrictions using Remote UI management utility. This prevents printers' settings and workflows to be altered and disrupted by users.



PRINTER MANAGEMENT SOLUTIONS

PROFESSIONAL PRINT & LAYOUT

Realise high print quality through enhanced printing workflow with the introduction of Professional Print & Layout which offers versatility with features as below:

- Auto nesting of images
- Printing of Exif data and print settings
- Pattern printing
- Enhanced layout functions
- Soft proofing

MEDIA CONFIGURATION TOOL

Recognizing the vast array of media options, the PRO-series printers are equipped with Media Configuration Tool for print adjustments to provide optimum printing environments to suit printing objectives and applications for precised, high quality output.

Some adjustment features include:

- Add custom media information
- Edit media information
- Change names and order of media display
- Sharing media information stored on Media Configuration tool across all PRO-541S and PRO-561S, reducing administrators workload.

ACCOUNTING MANAGER

Accounting Manager serves as a powerful solution to accurately track print costs, ink and media consumption for single or multiple printers effortlessly for each individual prints, each department or each user through centralised management.

DIRECT PRINT AND SHARE

A powerful job submission tool that enables batch printing of multiple files type for efficient print workflow. Shortcut printing function allows pre-registered print setting for simple drag-and-drop operation that greatly enhances usability and productivity.

FREE LAYOUT PLUS

Create posters, internal bulletins and other documents with simple operations from works created using Microsoft Office, PosterArtist and other applications. Drag and Drop multiple images realise intuitive and effective operation. The four layout functions include tiling, standard-size layout, free layout and folded duplex support, making posters productions simple and efficient.

POSTERARTIST LITE

Create professional-looking posters inhouse easily with a wide variety of templates, stock photos and clip art for various business types and themes that suit a range of objectives and applications.

QUICK UTILITY TOOLBOX

Arrive easily to all kinds of software and solutions for these printers of users desired needs through this Quick Utility Toolbox portal with an easy click on the icon readily available at the bottom task bar of the PC screen.

AUTOCAD OPTIMISED PRINTER DRIVER

AutoCAD optimised printer driver specifically developed for optimal printing control for Autodesk AutoCAD enables faithful printing of drawing data created with AutoCAD.



SPECIFICATIONS

TECHNOLOGY		PRO-541S	PRO-561S
Printer Type		8 Colour 44"/ 1118 mm	8 Colour 60"/ 1524 mm
Print Technology		Canon Bubble-jet on demand (12 colour integrated type x 1 print head)	
Number of Nozzles		18,432 nozzles (1536 nozzles x 4 colour, 3072 nozzles x 4 colour)	
Maximum Print Resolution		2400 dpi x 1200 dpi	
Nozzle Pitch		600 dpi x 2	
Line Accuracy		±0.1 % or less User adjustments necessary. Printing environment and media must match those used for the adjustments. CAD paper required: Plain paper, CAD tracing paper, coated paper, CAD translucent matte film only.	
Ink Droplet Size		minimum 4 Picoliter per colour	
Ink Capacity	Sales Ink	160ml/ 330ml/ 700ml	
	Bundled Start Ink	330ml	
Ink Type		Pigment Inks - Photo Black, Matte Black, Cyan, Magenta, Yellow, Photo Cyan, Photo Magenta, Grey	
Printer Languages		SG Raster (Swift Graphic Raster), PDF (Version 1.7), JPEG (Version JFIF 1.02)	
Standard Interfaces	USB A Port	USB Memory (Direct Print)	
	USB B Port	Built-in Hi-Speed, Full Speed (12 Mbit/sec), High Speed (480 Mbit/sec), Bulk Transfer, Series B (4 pins)	
	Gigabit Ethernet	Built-in IEEE 802.3 10 base-T, IEEE 802.3u 100 base-TX/ Auto Negotiation, IEEE 802.3ab 1000 base-T/ Auto Negotiation, IEEE 802.3x Full Duplex. SNMP: Canon-MIB, HTTP, TCP/IP (IPv4/ IPv6)	
	Wireless LAN	IEEE802.11n/g/b. WEP (64/128bit), WPA-PSK (TKIP/AES), WPA2-PSK (TKIP/AES)	
Memory		Standard Memory: 3GB, Hard Disk Drive: 500GB (Encrypted HDD)	
PRINTING TIME FOR A0 PAGE SIZE			
Media Type		Plain Paper*	Heavyweight Coated Paper*
Print Mode		Fast	Standard
Print Time		01:21	02:24
		01:23	02:24
		05:34	02:56
		04:44	05:34
		*Print speed is based on default setting using ISO JIS SCID N5 image and does not include data processing, data transfer, or preprint operations. Print speed may vary depending on the system configuration, interface, software, document complexity, print mode, page coverage, type of paper used, etc.	
		Photo Glossy Paper*	
		Fast	Standard
		High	
		02:56	04:44
		05:34	05:34
MEDIA HANDLING		PRO-541S	PRO-561S
Media Feed and Output		Roll Paper: One Roll, Front-loading, Front Output Added Roll Paper: One Roll, Front-loading, Front Output (60" model: default, 44" model: option) Cut Sheet: Front-loading, Front Output (Manual Feed using Media Locking Lever)	
Media Width		Roll Paper/ Cut Sheet: 152.4~1118mm	Roll Paper/ Cut Sheet: 152.4~1524mm
Media Thickness		Roll Paper/ Cut Sheet: 0.07~0.8mm	
Minimum Printable Length		Roll Paper: 101.6mm excluding Cloth and Canvas medias. 200mm for Cloth and Canvas media Cut Sheet: 203.2mm	
Maximum Printable Length		Roll Paper: 18m (varies according to the OS and application) Cut Sheet: 2133.6mm	
Maximum Media Roll Diameter (Outer)		170mm or less	
Media Core Size		Internal diameter of roll core: 2"/3"	
Margins Recommended Area	Recommended Area	Roll Paper: Top: 20 mm, Bottom: 3 mm, Side: 3 mm Cut Sheet: Top: 20 mm, Bottom: 20 mm, Side: 3 mm	
	Printable Area	Roll Paper: Top, Bottom, Side: 3 mm Roll Paper (Borderless): Top, Bottom, Side : 0 mm Cut Sheet: Top: 3 mm, Bottom: 20 mm, Side: 3 mm	
Media Take-Up Roll Unit		Dual directions rolling take-up	
Borderless Printing Width (Roll Only)		Recommended: 515mm (JIS B2), 728mm (JIS B1), 1030mm (JIS B0), 594mm (ISO A1), 841mm (ISO A0), 10", 14", 17", 24", 36", 42", 44" Printable: 257mm (JIS B4), 297mm (ISO A3), 329mm (ISO A3+), 420mm (ISO A2), 6", 8", 12", 16", 20", 22", 30", 300mm, 500mm, 600mm, 800mm, 1000mm and custom roll width (152.4~1118mm)	Recommended: 515mm (JIS B2), 728mm (JIS B1), 1030mm (JIS B0), 594mm (ISO A1), 841mm (ISO A0), 10", 14", 17", 24", 36", 42", 44", 50", 54", 60" Printable: 257mm (JIS B4), 297mm (ISO A3), 329mm (ISO A3+), 420mm (ISO A2), 6", 8", 12", 16", 20", 22", 30", 300mm, 500mm, 600mm, 800mm, 1000mm and custom roll width (152.4~1524mm)
Maximum Stacking Number of Delivered Prints		Standard position: 1 sheet, Flat position: A2 landscape, glossy paper less than 10 sheets, Coated paper less than 20 sheets (excludes strong curled condition)	
Delivery Directions		Face-Up, Front Side	
DIMENSIONS & WEIGHT		PRO-541S	PRO-561S
Physical Dimensions W x D x H (mm) / Weight (kg) (including Roll Holder Set, excluding ink and print head)	Main Unit + Stand + Basket	1593 x 984 x 1168 mm (Basket Opened) 1593 x 766 x 1168 mm (Basket Closed) Approx 122 kg	1999 x 984 x 1168 mm (Basket Opened) 1999 x 766 x 1168 mm (Basket Closed) Approx 141 kg
	Main Unit + Roll Unit + Stand + Basket	1593 x 984 x 1168 mm (Basket Opened) 1593 x 766 x 1168 mm (Basket Closed) Approx 143 kg	1999 x 984 x 1168 mm (Basket Opened) 1999 x 766 x 1168 mm (Basket Closed) Approx 169 kg
Packaged Dimension W x D x H (mm) / Weight (kg)	Printer (Main Unit with Stand and Pallet)	1820 x 915 x 1042 mm Approx 176 kg	2227 x 915 x 1022 mm Approx 212 kg
	Roll Unit	1727 x 562 x 461 mm Approx: 33kg	2133 x 562 x 461 mm Approx 42kg
POWER AND OPERATING REQUIREMENTS		PRO-541S	PRO-561S
Power Supply		AC 100-240V (50-60Hz)	
Power Consumption		Printing: 116 W or less Sleep Mode: 2.0W or less Power Off: 0.3W or less	Printing: 109 W or less Sleep Mode: 2.0W or less Power Off: 0.3W or less
Operating Environment		Temperature: 15°C~30°C, Humidity: 10%~80% RH (no dew condensation)	
Acoustic Noise	Pressure	Operation approx. 49 dB (A) (Glossy paper, Image, Print priority: Standard) Standby: 35 dB (A) or less (Measured on ISO7779 standard)	
	Power	Operation approx. 6.6 Bels or less (Glossy paper, Image, Print priority: Standard) (Measured on ISO7779 standard)	Operation approx. 6.7 Bels or less (Glossy paper, Image, Print priority: Standard) (Measured on ISO7779 standard)
Environment Certificates		International Energy Star Program (WW), TUV, CB	
ACCESSORIES AND CONSUMABLES		PRO-541S	PRO-561S
Accessories	Roll Unit	RU-43 (Optional)	RU-63 (Mandatory)
	2"/ 3" Roll Holder	RH2-46 (Optional)	RH2-66 (Optional)
Consumables	Inks	PFI-51(160ml)/ PFI-53(330ml)/ PFI-57(700ml)	
	Print Head	PF-10	
	Cutter Blade	CT-07	
	Maintenance Cartridge	MC-30	



CANON SINGAPORE PTE. LTD.
1 Fusionopolis Place, #15-10 Galaxis, Singapore 138522
Tel : 65-6799-8888 | Fax : 65-6799-8882 | www.canon.asia.com

CANON BUSINESS PARTNER / DEALER'S STAMP

This document is for information purpose only. The contents are subject to change without notice. Product options, name and availability may vary by regions. We expressly disclaim any liability or contractual obligations with respect to this document. Brands and product names are trademarks and/or registered trademarks of their respective owners.

Warning: Unauthorised recording of copyrighted materials may infringe on the rights of copyright owners and may be contrary to copyright laws.