

SIMPLE. SERVERLESS. SECURE.

Secure print, copy, and scan management on the cloud

uniFLOW Online is a scalable and secure cloud-based solution for organizations of all sizes, designed to enhance multifunctional devices' capabilities. The solution aims to optimize business processes while reducing capital spending on costly hardware infrastructure.

With device authentication and every print, scan and copy job tracked, the solution offers security and control to reduce overall business cost.



MOBILITY

Empowering Employees, Increasing Productivity

MOBILE PRINT

Regardless of location, users can use their smartphones or tablets to print document securely. Mobile printing is also offered for guest users.

MY PRINT ANYWHERE

Empower users with the convenience to print from the nearest accessible device at anytime.

RESILIENCE ENSURED

To ensure maximum productivity in case of network failure, uniFLOW online supports up to the last 100 cached users' accessibility to the devices.

VIPs can also be configured to ensure no disruption are caused in their daily print requirements under such outage.



CONNECTIVITY



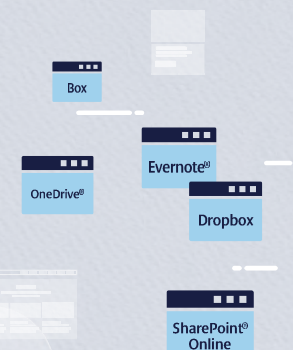
COST EFFICIENCY

With cloud-based infrastructure, hefty servers cost and maintenance are no longer required. Companies can now capitalize on the scalability of uniFLOW Online to optimize IT resources and increase cost efficiency.

CONNECTED SCAN DESTINATIONS

uniFLOW Online enables direct document scanning to major cloud-based destinations such as Dropbox, Google Drive™, Box, Microsoft OneDrive®/OneDrive® for Business, Evernote®, Microsoft SharePoint® Online and Concur®, upon authentication at the device.

Scan profiles can also be configured by user or group. The lean and intuitive user interface of the scan workflows brings about greater productivity.

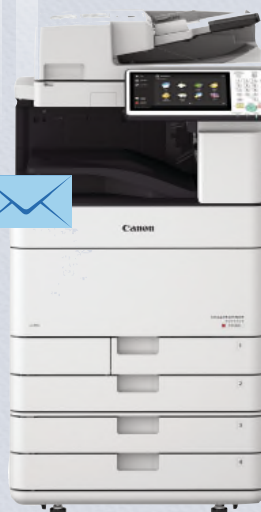


CONFIGURATION DATA

ACCOUNTING DATA

SCAN JOB

PRINT JOB



NETWORK FIREWALL



FLEXIBLE AUTHENTICATION OPTIONS

Various authentication options (Card, Pin, Department ID) are made available to enhance user convenience without compromising security.

SECURITY

SECURE PRINT ENVIRONMENT

uniFLOW Online users are able to print documents securely.

Print jobs are managed by uniFLOW SmartClient within the local company network. All submitted print jobs remain within user's personal secure print queue until user authenticates for release at the device.

The spool file is automatically deleted from a user's PC once it has been printed or following a preset period.

CONTROL AND REPORTING



TRACK PRINT, SCAN, AND COPY COSTS

uniFLOW Online enables the administrator to allocate relevant costs to individual users, devices and departments by tracking the organization's printing, copying and scanning costs.

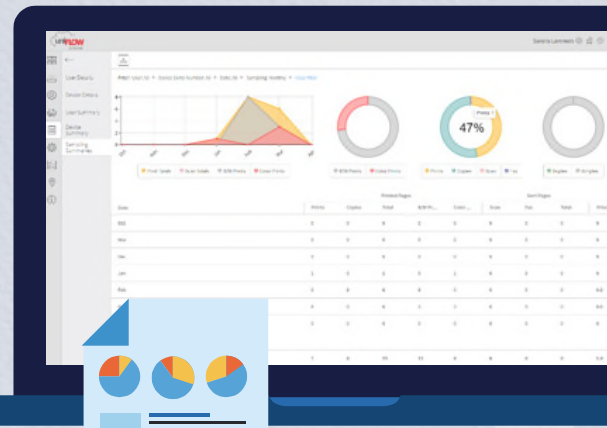
CENTRALISED ADMINISTRATION CONTROL

Simplified, single platform allows administrators to easily track, assess and centrally configure all device settings and activities in the cloud.

INFORMATION VISIBILITY

Dashboard furnishes quick updates for administrators to gain overview on devices' usage. Various reports are also available to provide valuable insights on print usages.

With greater information visibility, organisation is able to pinpoint areas where cost can be scaled down and implement appropriate measures to improve cost efficiency.



uniFLOW ONLINE OFFERS:



Flexible Authentication & Efficiency



Secure Print & Scan



Cost Visibility & Savings



Mobile Connectivity



Centralized Resource Optimization

Save costs, increase security and enhance productivity with Canon's innovative cloud-based platform. Contact a Canon sales representative to see how we can help.

Canon Singapore Pte. Ltd.
1 Fusionopolis Place, #15-10, Galaxis, Singapore 138522
www.canon-asia.com

Canon Hongkong Co., Ltd.
5/F., Tower A, China Life Center, 18 Hung Luen Road, Hunghom, Kowloon, Hong Kong
www.canon.com.hk

Canon India Private Limited
7th Floor, Tower B, Building #5, DLF Epitome, DLF Phase III, Gurgaon 122002, Haryana, India
www.canon.co.in

Canon Marketing (Malaysia) Sdn. Bhd.
No. 6-2-01, Canon Tower, UOA Business Park (Tower 6), Jalan Pengaturcara U1/51A, Seksyen U1, 40150 Shah Alam, Selangor, Malaysia
www.canon.com.my

Canon Marketing (Philippines), Inc.
7F Commerce and Industry Plaza, 1030 Campus Avenue corner Park Avenue, McKinley Hill, Fort Bonifacio, Taguig City, Metro Manila, Philippines 1634
www.canon.com.ph

Canon Marketing (Taiwan) Co. Ltd
19F, No. 100, Sec. 2 Roosevelt Road, Taipei, Taiwan.
www.canon.com.tw

Canon Marketing (Thailand) Co. Ltd.
No.98 Sathorn Square Office Tower, 22nd-24th floor, North Sathorn Road, Silom, Bangkok, Bangkok 10500
www.canon.co.th

Canon Marketing (Vietnam) Co. Ltd
Level 10, President Place, 93 Nguyen Du, Dist 1, Ho Chi Minh City, Vietnam
www.canon.com.vn

Canon
Delighting You Always

This document is for information only and the contents are subject to change without notice. Errors and omissions expected. Images are simulated. Weight and dimensions are approximates. Nothing in this document should be construed as a warranty. Product/Service options, name and availability may vary by region. We expressly disclaim any liability or contractual obligations with respect to this document. Canon, among others, is the trademark of Canon Inc. and/or its affiliates. Other names, marks and logos contained in this document may be the registered trademarks or trademarks of their respective owners.

Dealer's Stamp

0216W781 © 2019 Canon Singapore Pte. Ltd. All rights reserved.